

ADVENTURES IN DECORATING : HOUSES WITH A SENSE OF SELF

February
2025

HOUSE & GARDEN®

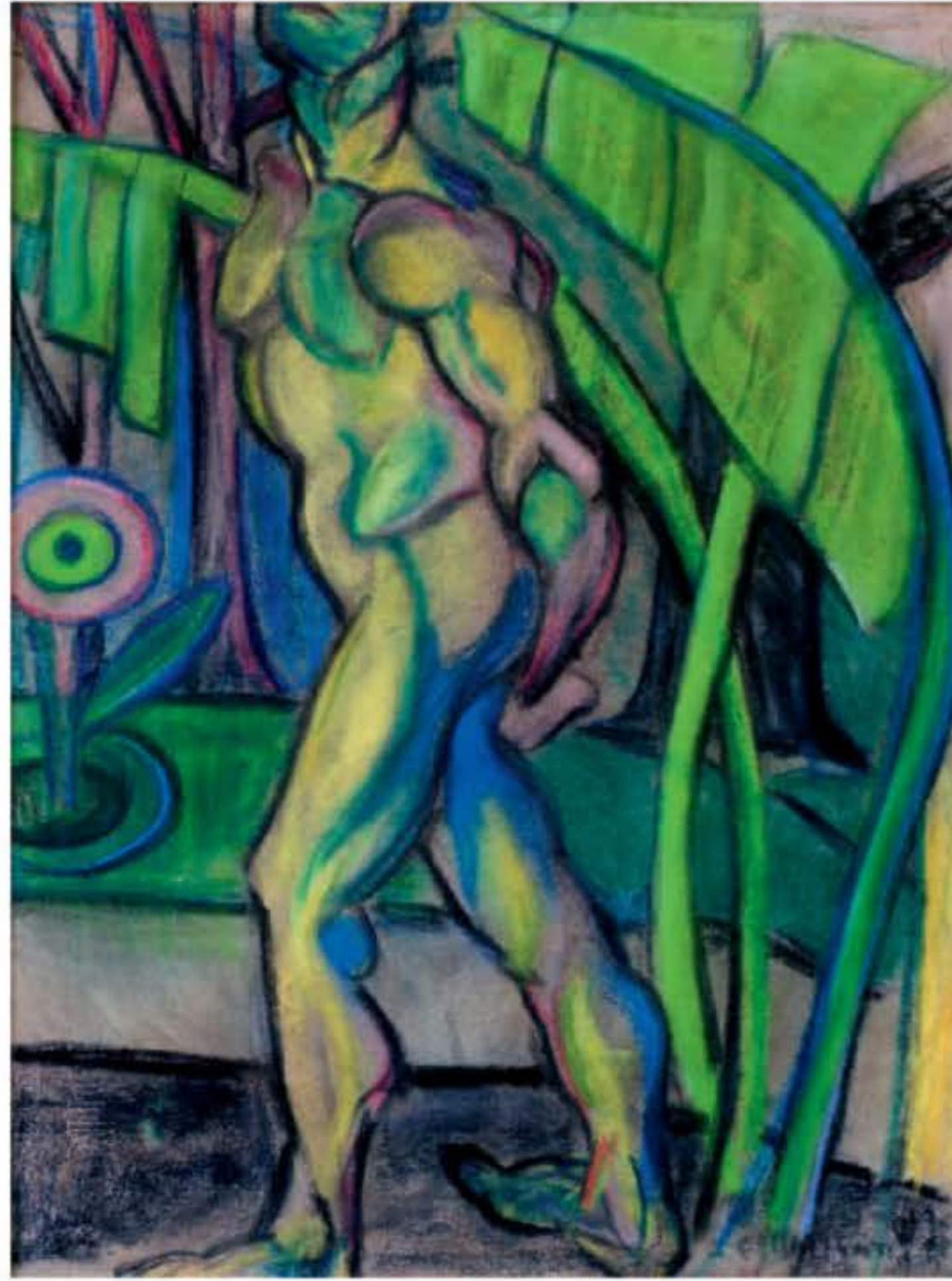


MOUNTAIN HIGHS
SWITZERLAND'S STYLISH
NEW ALPINE HOTELS

SPRING REVAMPS
THRIFTY TIPS FROM
AN INTERIORS EXPERT

Brazilian influences

Modernism, which, from the early 20th century, sought a new alignment between art, architecture, design and life, was a global movement, yet it varied between countries and continents. In Brazil, the tropical environment resulted in a rich juxtaposition. 'The Brazilian people took inspiration from Europe, but gave modernism a bossa nova feel,' explains the designer Hubert Zandberg. He is a collector of mid-century Brazilian furniture, which is typically made using locally available materials such as leather, wood and cane. Happily, Brazilian modernism has recently been increasing in visibility on this side of the world. Those who attended the London edition of PAD in October last year will have spotted the strikingly appealing stands of galleries Brazil Modernist, located in Paris with a São Paulo connection (brazilmodernist.com), and London-based JCRD Design, which is run by Rio de Janeiro-born Luiz Kessler (@jcrd.design). And coming to the Royal Academy of Arts, W1, this year is *Brasil! Brasil! The Birth of Modernism* (January 28-April 21; royalacademy.org.uk). The exhibition focuses on the Brazilian artists who embraced international influences and the contemporary trends to create a new type of modern art that drew on their country's varied sources, including the Afro-Brazilian experience, indigenous identity and the vibrant landscape. **Pictured** (from top) *Man in Seven Colours*, 1915-16, Anita Malfatti. *Three Orishas*, 1966, Djanira da Motta e Silva



Three more to see...



London Art Fair 2025

Taking place at the Business Design Centre, N1, this always inspiring fair will showcase a selection of the best modern and contemporary British art from leading galleries and private dealers, available to buy at a range of prices. An accompanying programme of interesting talks and events increases the opportunities for discovery. *January 22-26; londonartfair.co.uk* **Pictured** *Two Figures*, circa 1948, Robert Colquhoun



Patrick Heron | Victor Pasmore: VIII São Paulo Biennial Great Britain 1965 Revisited

This joint exhibition in 1965 was a pivotal moment for two leading figures of British modernism and for the global impact of British abstraction. Their works are being shown at gallery Hazlitt Holland-Hibbert, SW1, in collaboration with Frankie Rossi Art Projects. *Until January 31; hh-h.com* **Pictured** *Four in Deep Cadmium*, 1964, Patrick Heron



Collecting Modernism: Pablo Picasso to Winifred Nicholson

Showing at Charleston's gallery space in Lewes, this notable collection was started by Eddy Sackville-West. He passed it on to his former lover, the gallerist Eardley Knollys, who bequeathed it to his partner Mattei Radev, with both adding to it. *Until March 2; charleston.org.uk* **Pictured** *Boat on the Far River*, undated, Winifred Nicholson □

ANITA MALFATTI, *MAN IN SEVEN COLOURS*, 1915-16. PASTEL AND CHARCOAL ON PAPER, 62 X 46CM. ACERVO MUSEU DE ARTE BRASILEIRA - MAB FAAP, SÃO PAULO, BRAZIL. © ANITA MALFATTI. PHOTO: FERNANDO SILVEIRA MAB; DJANIRA DA MOTTA E SILVA, *THREE ORISHAS*, 1966. OIL ON CANVAS, 130.5 X 195.5CM. COLLECTION OF THE PINACOTECA DO ESTADO DE SÃO PAULO, PURCHASED BY THE GOVERNO DO ESTADO DE SÃO PAULO, 1969. © INSTITUTO PINTORA DJANIRA; ROBERT COLQUHOUN, *TWO FIGURES*, 1948. OIL ON CANVAS, COURTESY JENNA BURLINGHAM GALLERY. PHOTO: TODD-WHITE ART PHOTOGRAPHY, COURTESY OF HAZLITT HOLLAND-HIBBERT; FRANKIE ROSSI ART PROJECTS © PATRICK HERON TRUST; WINIFRED NICHOLSON, *BOAT ON THE FAR RIVER*, OIL ON CANVAS, BRIDGEHAM IMAGES, THE RADEV COLLECTION