

# HOUSE & GARDEN®

June  
2018  
£4.40

## THE TOP 100 INTERIOR DESIGNERS

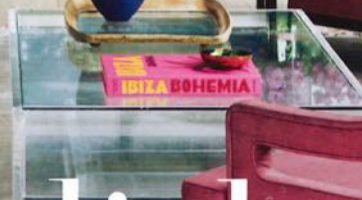
YOUR 30-PAGE GUIDE TO  
THE BEST INTERIOR DESIGN  
TALENT IN BRITAIN TODAY

*Plus*

THE BEST OUTDOOR FABRICS  
THE JOY OF CUT FLOWERS  
FRESH, SEASONAL RECIPES

English  
country  
houses

*From a modern  
newbuild in  
Surrey to a revived  
Cotswold manor*





T H E  
H O U S E & G A R D E N

top  
1000

I N T E R I O R  
D E S I G N E R S

ABBIE DE BUNSEN  
ADAM BRAY  
ALIDAD  
ASHLEY HICKS  
BEATA HEUMAN  
BEN PENTREATH  
BENTHEIM  
BERDOULAT  
CARDEN CUNIETTI  
CAROLINE HOLDAWAY  
CAROLINE PATERSON  
CAROLINE RIDDELL  
CAVE INTERIORS  
CHARLES RUTHERFOORD  
CHARLOTTE CROSLAND  
CHESTER JONES  
CHRISTOPHE GOLLUT  
CHRISTOPHER HODSOLL  
COLIN ORCHARD  
COLLETT-ZARZYCKI  
CVP DESIGNS

DAVID COLLINS STUDIO  
DAVID MLINARIC  
DE ROSEE SA  
DOUGLAS MACKIE  
EDWARD BULMER  
EDWARD HURST  
FAYE TOOGOOD  
FIONA BARRATT  
FRANCIS SULTANA  
GAVIN HOUGHTON  
GUY GOODFELLOW  
HACKETT HOLLAND  
HARDING & READ  
HARRIET ANSTRUTHER  
HENRI FITZWILLIAM-LAY  
HENRIETTA SPENCER-  
CHURCHILL  
HOWE  
HUBERT ZANDBERG  
HUGH LESLIE  
JANE CHURCHILL

JOANNA PLANT  
JOANNA WOOD  
JOHN MCCALL  
JOHN MINSHAW  
JOHN STEFANIDIS  
JR DESIGN  
KATHARINE POOLEY  
LAMBERT & THURNHERR  
LOUISE JONES  
MADDUX CREATIVE  
MARION LICHTIG  
MARK GILLETTE  
MARTIN BRUDNIZKI  
MARTIN HULBERT  
MAX ROLLITT  
MCWHIRTER MORRIS  
MELISSA WYNDDHAM  
MLINARIC, HENRY &  
ZERVUDACHI  
MOORE DESIGN  
NATALIA MIYAR

NICKY HASLAM STUDIO  
NINA CAMPBELL  
OLIVER LAWS  
PAOLO MOSCHINO FOR  
NICHOLAS HASLAM  
PENNY MORRISON  
PETER MIKIC  
RABIH HAGE  
RETROUVIUS  
RITA KONIG  
RIVIÈRE INTERIORS  
ROBERT KIME  
ROSE UNIACKE  
RUI RIBEIRO  
SALVESEN GRAHAM  
SAMANTHA TODHUNTER  
SARAH DELANEY DESIGN  
SARAH STEWART-SMITH  
SHALINI MISRA  
SIBYL COLEFAX  
& JOHN FOWLER

SIGMAR  
SIMS HILDITCH  
SMITH CREATIVE  
STUDIO ASHBY  
STUDIO DUGGAN  
STUDIO REED  
SUSIE ATKINSON  
SUZY HOODLESS  
TAYLOR HOWES  
TODHUNTER EARLE  
TURNER POCOCK  
VANRENNEN GW DESIGNS  
VEERE GRENNEY ASSOCIATES  
VIRGINIA HOWARD  
VSP INTERIORS  
WALDO WORKS  
WESTENHOLZ ANTIQUES &  
INTERIOR DECORATION  
WILLIAM NICKERSON  
WILLIAM SMALLEY  
WOODY CLARK



[1] A bathroom designed by Hugh Leslie. [2] Hubert Zandberg decorated this London bedroom



[1]

HUBERT ZANDBERG  
INTERIORS

Hubert Zandberg projects are recognisable for a considered, tailored and luxurious look. The South African designer has worked in the industry for more than 20 years and set up his architectural and interior design service in 2002.

**Philosophy** 'Our design process is about empathy – never ego.'

**Key influences** 'First, icons who exhibit a clarity in their design conviction, such as Elsie de Wolfe, Madeleine Castaing and Jean Cocteau. Secondly, Africa. Little in life will have such an impact on you as the landscape you grew up in.'

**Alternative career** 'I read law at university, followed by a postgrad in international relations to prepare for a career as a diplomat.'

**Expect** 'We always include something from nature, or an antique piece with a story.'

[hzzinteriors.com](http://hzzinteriors.com)

HUGH LESLIE

Hugh Leslie has honed his keen eye for detail over 30 years in the business. His career has taken in the great and the good, with stints at Sibyl Colefax & John Fowler, Mlinaric, Henry & Zervudachi and Chester Jones before he set up on his own in 2002.

**Philosophy** 'Design appropriately for the project. Give every space a purpose – if a space has a purpose, it will be used and comes alive.'

**Key influences** 'Coming from New Zealand, where the light is bright and colours are vibrant, I always strive to introduce colour and contrast into our work. I was exposed to great art collectors as a young man; my appreciation of beautiful things influences me significantly.'

**Expect** 'Well-made joinery – nothing has such a capacity to enrich a room.'

[hughleslie.com](http://hughleslie.com)



[2]

JANE CHURCHILL

Thanks to nearly 40 years of experience, you are in safe hands with Jane Churchill. She is the go-to designer for those looking for stylishly comfortable, welcoming interiors that defy age.

**Philosophy** 'Proportion and scale. These are things you learn only with experience.'

**Key influences** 'My great aunt Nancy Lancaster – the doyenne of design – and her sister, my grandmother. She had much less money and a smaller house, which was still original and ahead of its time. It meant that my sister and I saw both ends of the spectrum.'

**Advice** 'Rules are made to be broken.'

**Expect** 'Extremely comfortable sofas.'

**Say no to** 'Low, dumpy bedside lamps and windowsill-length curtains.'

[janechurchill.com](http://janechurchill.com) ▷